

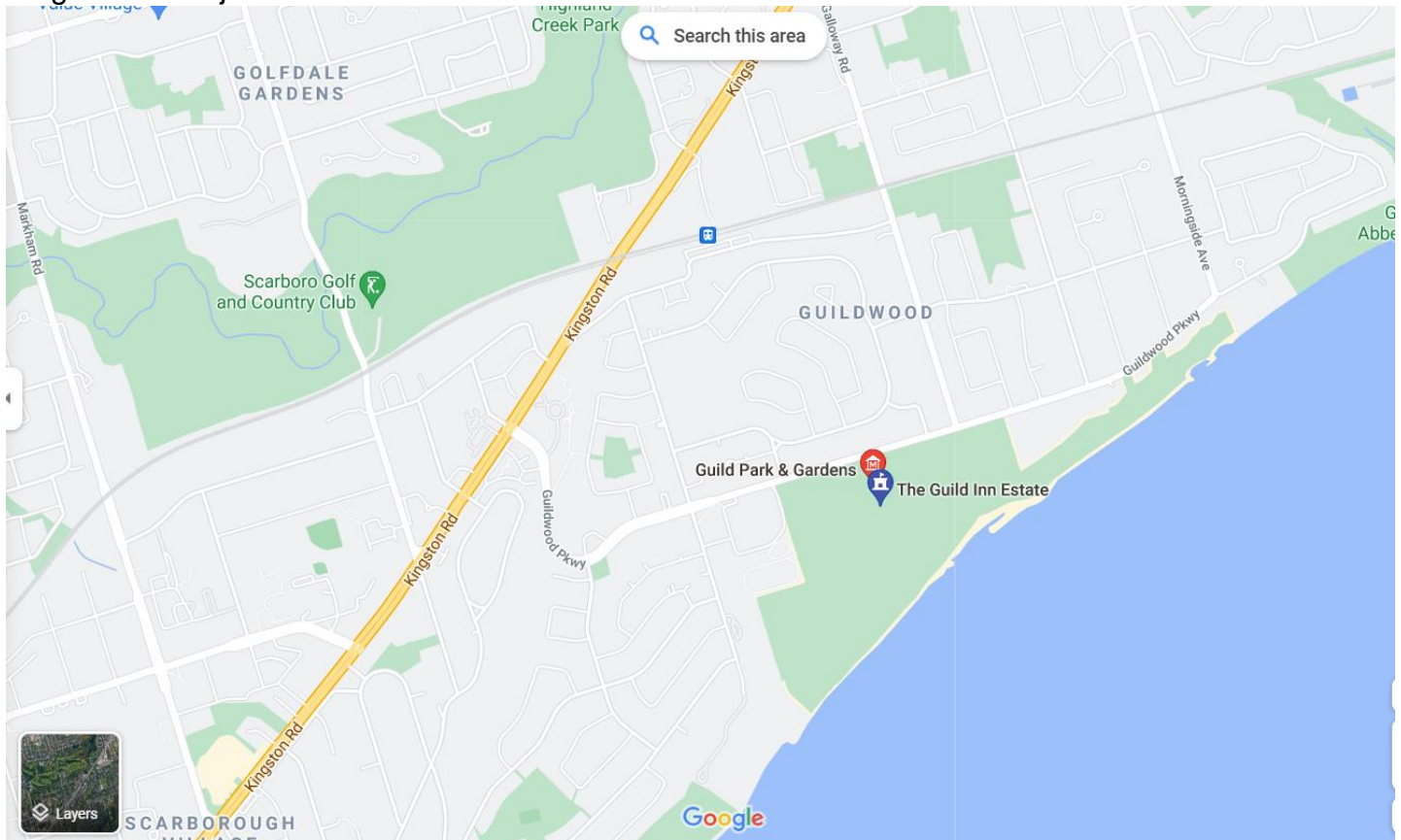


TWS BULLETIN

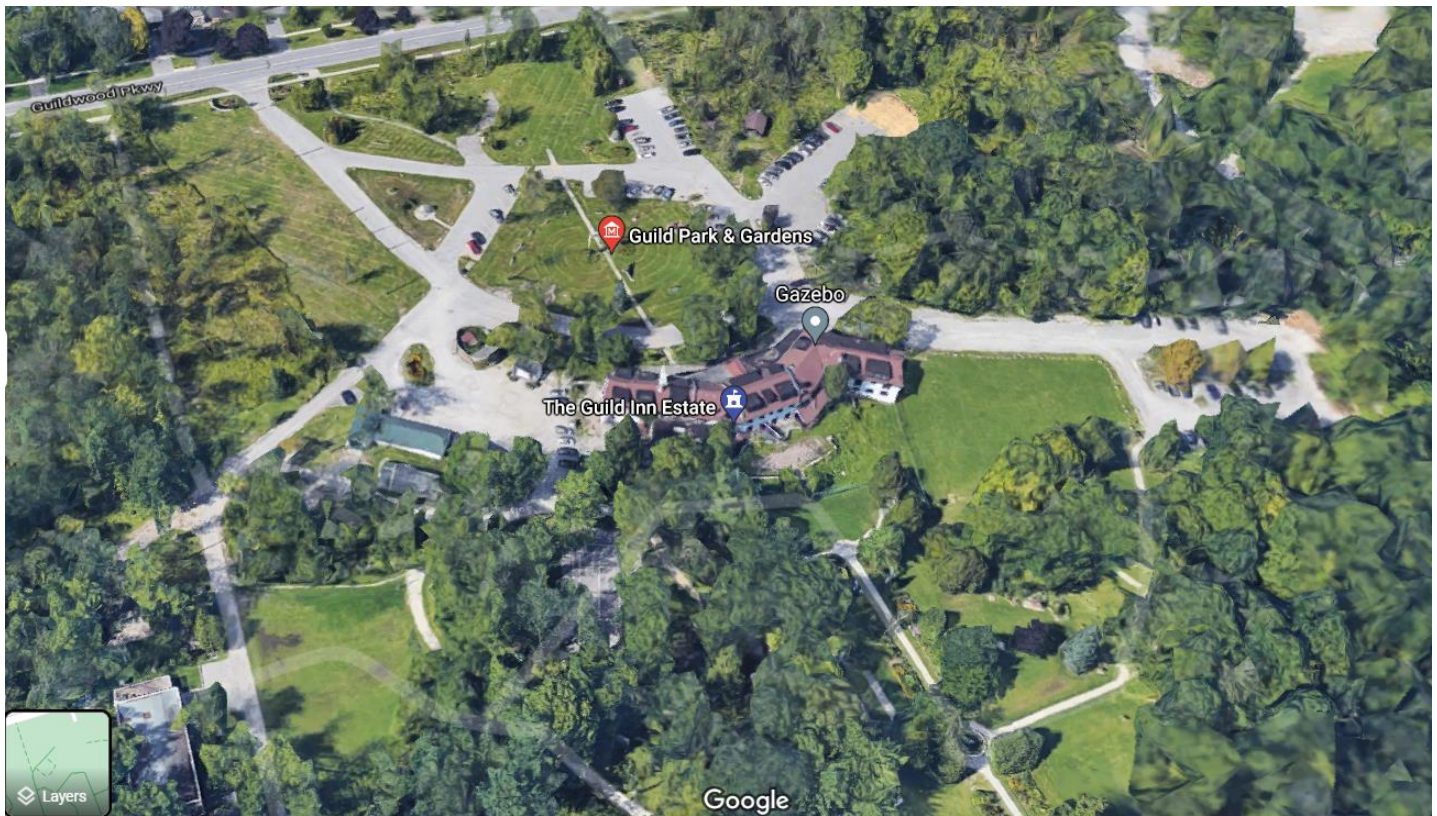
July, 2021

SECOND PRESIDENT'S PAINT OUT at: GUILD INN PARK AND GARDENS WEDNESDAY AUGUST 18th 10:00 am

This location has parking and flat trails that lead to various points of view throughout the park. The garden and park is located at 201 Guildwood Parkway, which is south-east of the Eglinton Ave and Kingston Road junction



TTC has a bus route to the location.



There are public washrooms and porta pottie facilities adjacent to the parking lot. We can meet at the open air gazebo located to the south end of the facility. We can paint anywhere in the park. After 3 hours of painting, we will meet at 1:00pm back at the open air gazebo to view our paintings in a socially distanced manner. My cell is 416-708-6782 if you get lost or just want to check in. If you text me, please identify who you are. See you there!

Doug Geldart, President, TWS